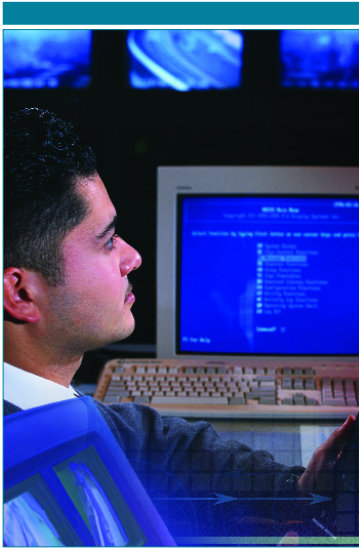
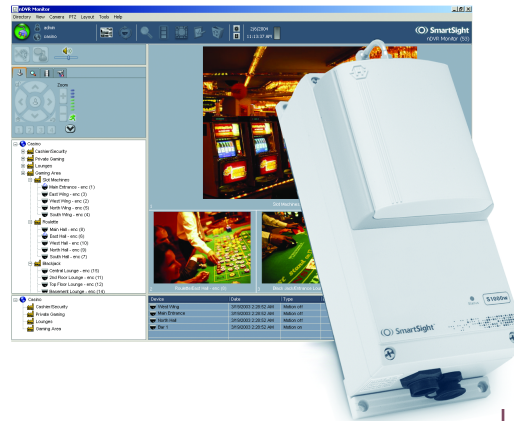


SmartSight™ S1000W

WIRELESS VIDEO TRANSMITTER



WIRELESS.
DISTRIBUTED.
NETWORKED.



License-Free 2.4 GHz ISM Band

Product Overview

Part of Versalis™, Verint's SmartSight Enterprise-Class Managed Video Solutions, the S1000w wireless Ethernet (802.11b) video transmitter operates in the 2.4 GHz ISM band. It delivers high-quality MPEG-4-based video at 30 frames per second (fps). It is specifically designed to deploy cameras in hard to wire locations, or to quickly extend the reach of your wired CCTV system. This wireless server is built on open standards to provide long-term investment protection.

Combined with standard 802.11 wireless access points or with the SmartSight S3000™ series of outdoor wireless bridges and repeaters, the S1000w enables analog CCTV extension over the enterprise's LAN at a cost lower than that of laying new cables.

You can use several of these transmitters and bridges or repeaters to create multiple video links covering a large geographical area (e.g., citywide monitoring). Configuration and management are made easy with the SmartSight nDVR™ and nDVR Pro™, or SConfigurator™ software.

KEY FEATURES

- ✓ Professional solution allowing cost effective wireless extension of traditional CCTV systems or migration of analog CCTV cameras to IP networks
- ✓ SSL-based user authentication
- ✓ MPEG-4-based video encoding of 30 fps for high-quality video at low bandwidth
- ✓ Autosensing RS-232/422/485 serial port for transparent connectivity to motorized domes, PTZ cameras, and other asynchronous serial devices
- ✓ Simple connectivity to PIR detectors and other sensors/alarms
- ✓ All firmware upgradeable via the network (including the video codec)
- ✓ Optional bidirectional audio interface
- ✓ Video loss alarm
- ✓ Compatibility with SmartSight's S1500e series 10/100Base-T Ethernet video servers
- ✓ User-friendly system management features through the SmartSight nDVR, nDVR Pro, or SConfigurator software

SmartSight™ S1000w

WIRELESS VIDEO TRANSMITTER

NETWORK

Air interface	Wireless Ethernet (802.11b)
Frequency	2.40-2.4835 GHz (ISM)
Modulation	Direct sequence spread spectrum (DSSS)
Output power	14 dBm
System gain	122 dB (with 8.5 dBi gain antenna) 135 dB (with 16 dBi gain antenna)
Data rate	1, 2, 5.5, and 11 Mbps (max. burst rate)
Range (RF line of sight)	Up to 4 miles (6.2 km) with 8.5 dBi gain antenna Up to 13 miles (20 km) with 16 dBi gain antenna
Channel	11 (3 non-interfering)
Encryption	152-bit RC4
Protocols	RTP/IP, UDP/IP, and multicast IP DNS and DHCP client, HTTP 1.1 (Web server)
Security	SSL-based authentication

VIDEO

Input	1 composite, 1 Vpp into 75 ohms (NTSC/PAL)
Compression	MPEG-4-based (480 lines resolution)
Frame rate	1-30 fps programmable (up to 60 fields per second)

ALARM AND AUDIO

Alarm	Input: 2 dry contacts (up to 1 mA) Output: 1 relay contact (up to 48V at 100 mA)
Bidirectional audio	Input: 0 dBm into 600 ohms Output: -8 dBm into 600 ohms

SERIAL PORT

Electrical levels	Autolevel sensing RS-232 or RS-422/485
Operating mode	Transparent (supports any asynchronous PTZ serial protocol)

POWER

Input voltage	24V AC (optional 12V DC)
Consumption	11W (860 mA at 12V DC) 25 VA at 24V AC

PHYSICAL

Enclosure	NEMA 4X / IP 66 powder coat painted die-cast aluminum with wall-mount brackets
Size	9.0L x 3.9W x 3.8H in. (230L x 100W x 96H mm)
Weight	3.6 lbs (1.65 kg)
Environmental	-22°F to 122°F (-30°C to 50°C)
Humidity	95% non condensing at 122°F (50°C)

MANAGEMENT

Configuration	Remote: using SConfigurator or Telnet Local: via the serial port using any ASCII terminal
Firmware upgrade	Flash memory for upgrade of video codec and firmware over the network

CERTIFICATION AND REGULATION

Canada	Industry Canada RSS-139 and ICES-003
USA	FCC CFR47 part 15 (15.247, subpart B)

WARRANTY

	2-year limited warranty, covering parts and labor
--	---

ORDERING

Part number	S1000w-24VAC
Description	24V AC input wireless transmitter with built-in 8.5 dBi gain, 65° beamwidth antenna
Part number	S1000w-12VDC
Description	12V DC input wireless transmitter with built-in 8.5 dBi gain, 65° beamwidth antenna

Note: All transmitters come with 9-pin cables for video, data, and power; wall-mount and pole-mount brackets. Communicates with the S3000.

OPTIONAL ANTENNA

Part number	ANT-WP16-24/S
Description	16 dBi gain, 27° beamwidth, patch antenna with 3-foot (1-meter) SMA-N cable

OPTIONAL ACCESSORIES

Part number	JBOX
Description	Outdoor junction box with wall-mount and pole-mount brackets
Part number	PS12
Description	110V AC to 12V DC at 1A power supply
Part number	PS2440
Description	110V AC to 24V AC at 40 VA power supply
Part number	CAB8P
Description	10-foot (3-meter) cable assembly for audio and alarms

This document contains confidential and proprietary information of Verint Systems Inc. and is protected by copyright laws and related international treaties. Unauthorized use, duplication, disclosure or modification of this document in whole or in part without the written consent of Verint Systems is strictly prohibited.

By providing this document, Verint Systems is not making any representations regarding the correctness or completeness of its contents and reserves the right to alter this document at any time without notice.

Loronix, Lanex, HealthCheck, Dellis, nDVR, Loronix Video Manager, BehaviorTrack, MotionTrack, cctvware, SmartSight, and vCRM are trademarks of Verint Systems Inc. All other registered trademarks, trademarks and any associated logos are the properties of their respective owners.

© 2004 Verint Systems Inc. All rights reserved.