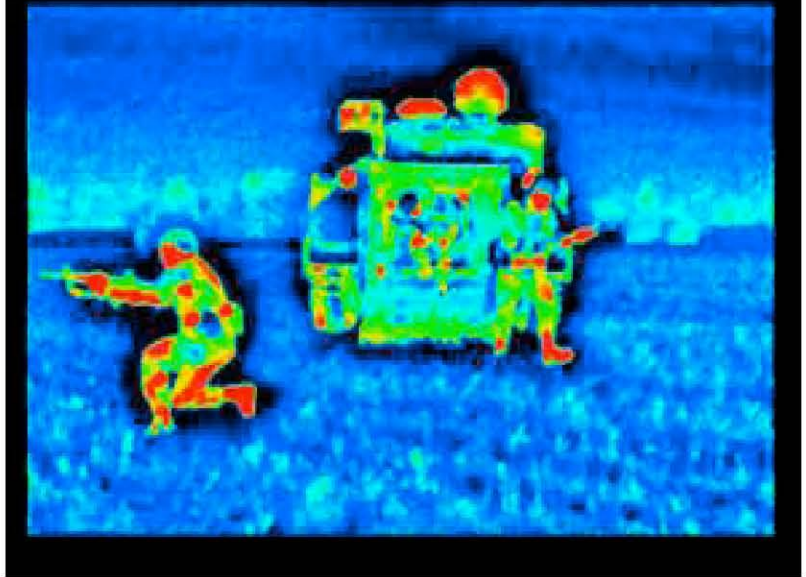


# RAYTHEON DETECTOR / MRTI 300 / 2000 PRODUCT SPECIFICATIONS

# MRTI 300/2000

Surveillance is changing. Darkness and bad weather can no longer be used for cover. Hurley & Associates has long been regarded as a leader in infrared technology. Now the MRTI System takes proven Raytheon detector technology one-step further by putting it in a device that offers the greatest low cost high power IR surveillance system yet. All three models are extremely rugged and environmentally tight (Military Approved) for use in the most abusive environments on land or at sea. The MRTI 300 or Digital 2000 is built to military specifications and currently DOD approved under the Tactical Automated Security Systems Program. The infrared detector is a hybrid high-resolution 320 X 240 uncooled FPA. The mechanical pan and tilt system utilizes stainless steel gears and chains with all sealed bearings to insure continuous operations for extended periods of time.

**“MRTI BUILT FOR FORCE PROTECTION”**



## MRTI-C (Camera)

The MRTI "C" thermal imaging system utilizes a high resolution, 320 x 240 uncooled focal plane array IR detector in an environmentally hardened, shock resistant, double enclosure. The units' standard configuration is with the 75mm f/1 lens (fixed focus) with carbon-hardened germanium optics and internal heater system. For 100mm f/1 Lens Electric Focus, (Digital Sensor Option MRTI 2000, Part# MRTI2000-CAM)

Part# SRTI300-CAM



## MRTI-F (Fixed)

The MRTI 300 "F" is the same system as described in the MRTI "C" with an integral pan and tilt unit. The pan and tilt is also an environmentally hardened unit with an internal heater system. This system can be computer controlled for fixed security applications. The MRTI "F" integrates easily to most building security standard equipment. Part# MRTI300-F

(Digital Sensor Option MRTI 2000).



## MRTI-M (Mobile/Marine)

The MRTI 300 "M" is a mobile/marine camera 24 or 12 volt powered for on the move infrared surveillance and pursuit. The "M" Pan & Tilt model is designed for military or commercial, vehicle or vessel and operates with a rugged joystick hand controller. The unit's standard configuration is with the 75mm f/1 lens with carbon-hardened germanium optics and internal heater system. (Digital Sensor Option MRTI 2000). Target Recognition, Man 750m

Part# MRTI300-M



*Base System Package with a 240 x 120 Detector, Camera / 12 x 9 FOV, Interface Module, Hand Controller and Cables*